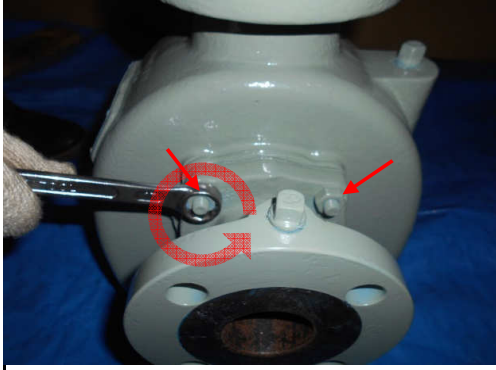


[2. Method of Disassembling Casing Side]

2-2S1-1 Detachment of Valve Case



Working Process

Loosen four nuts using a combination spanner (17) and detach the valve case.
Clean the valve case and keep it in a safe place.

Tools to Be Used
•Combination Spanner(17)

2-2S1-2 Detachment of Self-priming packing

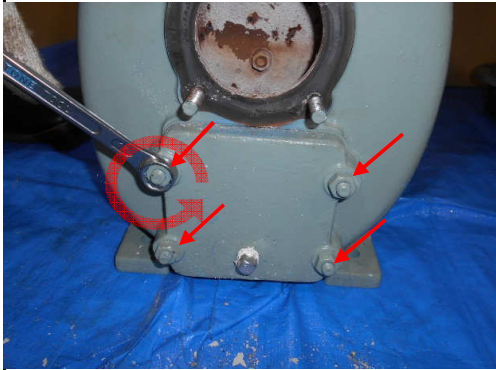


Working Process

Detach the self-priming packing.
Replace the self-priming packing with a new piece every time the casing side is disassembled.

Tools to Be Used

2-2S1-3 Detachment of Drain cover



Working Process

Loosen four nuts using a combination spanner (17) and drain cover.

Tools to Be Used
•Combination Spanner(17)

2-2S1-4 Detachment of Drain cover packing

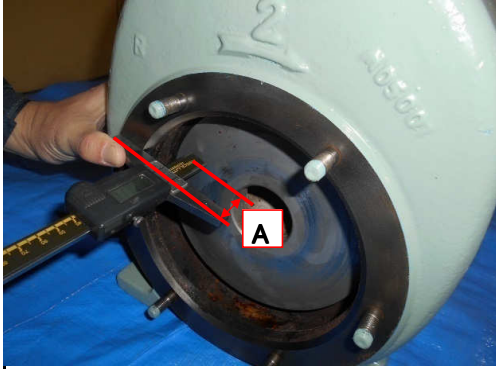


Working Process

Detach the drain cover packing.
Replace the drain cover packing with a new piece every time the casing side is disassembled.

Tools to Be Used

2-2S1-5 Clearance Check



Working Process
 Measure dimension A, shown in the drawing on the left, using a depth gauge. The design dimension of the specifications for motor 4P is 38 mm. (For the specifications for motor 2P, please contact the sales agent of the product.) If dimension A has become larger due to wear, the pumping power will be affected by that dimension change. (for example, 39 mm or more) In such a case, please replace the anti-wear plate.

Tools to Be Used
 •Depth gauge

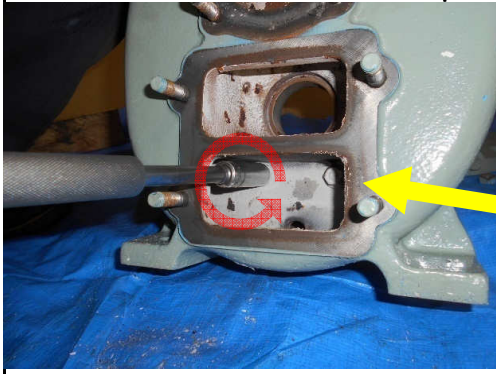
2-2S1-6 Detachment of Anti-wear plate



Working Process
 Insert a socket wrench (13), as shown in the drawing on the left, and loosen the nut. Then, remove the spring washer, flat washer, and seal washer.

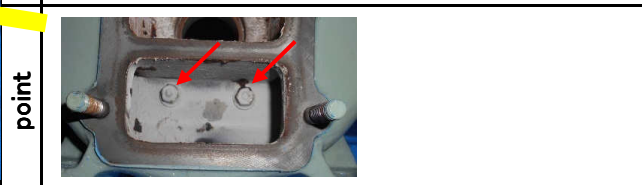
Tools to Be Used
 •Socket wrench (13)

2-2S1-7 Detachment of Anti-wear plate



Working Process
 Like in 2-2S1-6, loosen and remove the components at two positions.

Tools to Be Used
 •Socket wrench (13)



2-2S1-8 Detachment of Anti-wear plate



Working Process
 Take out the anti-wear plate as shown in the drawing on the left. Clean the anti-wear plate and keep it in a safe place.

Tools to Be Used
 •Waste cloth

point
 Hit the stud bolt lightly and evenly from the suction side. It will smoothly detach.